

Polaris Customized Waterfalls ORDER FORM FAX: 760-597-1267

Completed and signed form required for any fall over 8' or needs customization such as radius, deflector or nozzle profile.

Date: _____ Club P Member # _____

Builder's Name: _____ Contact Name: _____

Telephone: _____ Fax: _____

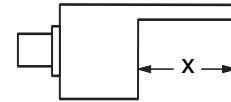
Distributor: _____ Branch: _____ Contact Name: _____

Purchase Order: _____ Telephone: _____ Fax: _____

Step 1 Select waterfall length, nozzle length and color. (Only one waterfall per order form.)

Length of waterfall: _____ in. Nozzle length: _____ in.

Color: White (standard) Gray Black Tan



Step 2 For radius cut PowerFalls UNDER 8 feet in length, see chart on reverse side for dimensions and write length and radius here:

PowerFall length: _____ in. Radius size: _____ ft.

For radius cut PowerFalls OVER 8 feet in length, see multi-unit ordering on the reverse side.

Check ONE of these radius styles:



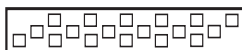
Step 3 Select nozzle insert (PowerStreams and RainFall ONLY)



Single Row: 4 gallons per foot



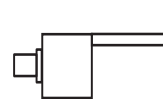
Double Row: 8 gallons per foot



Triple Row: 12 gallons per foot

PowerFall or CustomFall: 12 gallons per foot

Step 4 Select water feed and fitting size



Rear Feed (standard)



Bottom Feed



Side Feed

- Not suitable for:
- Over 4' in length
 - Over 8' with single row insert
 - Over 6' with double row insert

1-1/2 in.

2 in.

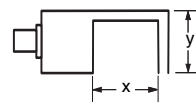
Input Fitting Size

Step 5 Select nozzle profile or deflector

• Minimum "x" dimension must be at least 1-1/2".

• With nozzle inserts, minimum "y" dimension must be at least 1-1/2".

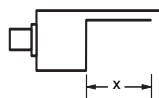
• Without nozzle inserts minimum "y" dimension must be at least 2-7/8".



Nozzle Profile

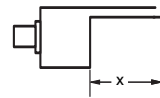
X= _____ in.

Y= _____ in.



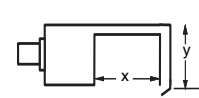
Down Deflector

X= _____ in.



Up Deflector

X= _____ in.



Down & Back Deflector

X= _____ in.

Y= _____ in.

PLEASE CONTINUE ON OTHER SIDE. POOL BUILDER MUST SIGN.

Polaris Customized Waterfalls ORDER FORM

Step 6

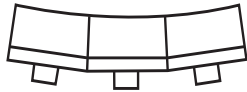
Any customized waterfall over 8 feet in length is a multi-unit.
Determined at the factory, each unit will have an X-Baffle and water inlet to ensure proper water flow.

Example (top view with back water inlet):

Straight



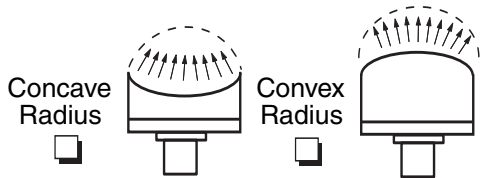
Radius



- Only front of waterfall is radius cut; back of waterfall unit is square
- For pricing or assistance with design on waterfalls over 8', call Polaris WaterDesigns at 1-800-822-7933.
- Upon confirmation of proper sizes, write length and radius here:

Fall Length: _____ Radius: _____

Check ONE of these radius styles:



6" Nozzle 9" Nozzle 12" Nozzle Custom Nozzle Not Available

		PowerFall Length								
		12"	18"	24"	36"	48"	60"	72"	84"	96"
Radius Size	1'									
	1.5'									
	2'									
	2.5'									
	3'									
	3.5'									
	4'									
	4.5'									
	5'									
	5.5'									
	6'									
	6.5'									
	7'									
7.5'										
8'										
8.5'										
9'										
9.5'										
10'										
10.5'										
11'										
11.5'										
12'										
12.5'										
13'										

BUILDER TIPS

- Due to potential alignment issues, multi-unit waterfalls should be plumbed using installation guide.
- Valve each separate waterfall feed.
- Install an in-line filter for dedicated waterfall pump lines with all PowerStreams.
- Nozzle and body must be properly supported.
- PowerFall installation should not exceed 3-1/2 feet above pool surface to ensure laminar sheet of water.

Step 7

POOL BUILDER MUST SIGN:

Please check your specifications and the Polaris confirmation form carefully. This is a custom product that is created by the information you provide. Polaris is not responsible for errors in measurement or alterations that occur in the pool design. Polaris must have all pages in order to process.

Quote Only

Approval Signature _____ Date _____

FAX: 760-597-1267